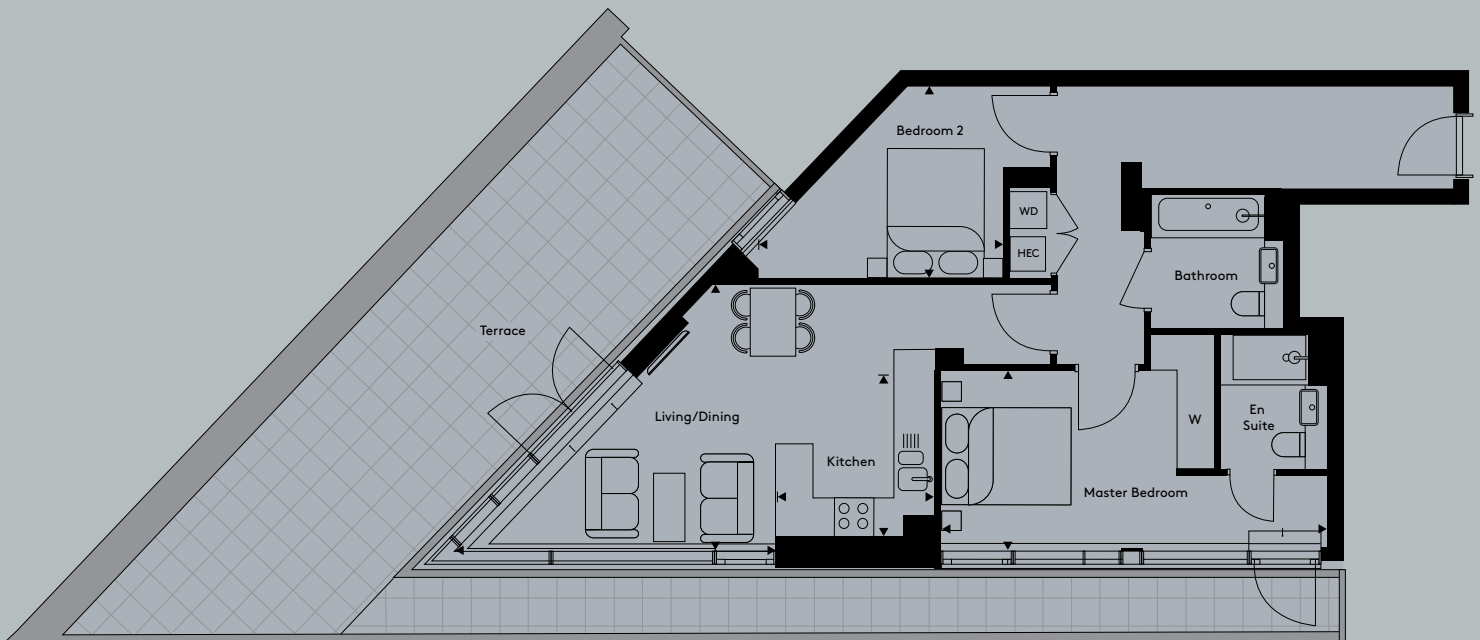


Apartment 35

2 bedroom apartment

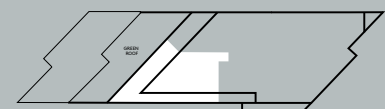
Floor	4
Apt No	35



Total Internal Area	805.9 sq ft	74.9 sq m
Living/Dining	16' 1" x 13' 9"	4897mm x 4200mm
Kitchen	8' 2" x 7' 10"	2500mm x 2387mm
Master Bedroom	20' 0" x 9' 4"	6089mm x 2845mm
Bedroom 2	12' 7" x 9' 11"	3846mm x 3020mm
Terrace	562.4 sq ft	52.3 sq m

Key

WD	Washer Dryer	HEC	Heating and Electrical Components
W	Fitted Wardrobe	C	Cupboard



Floorplans not to scale. The room sizes shown are taken from the dimension arrows on the floorplans which represent the maximum dimensions, a tolerance of +/- 5% is allowed. External finishes on certain designs, layouts, window positions and styles may vary, please check with the sales consultant. These floor plans are a guide only and may be subject to change. Area measurements are given as Gross Internal Area (GIA).