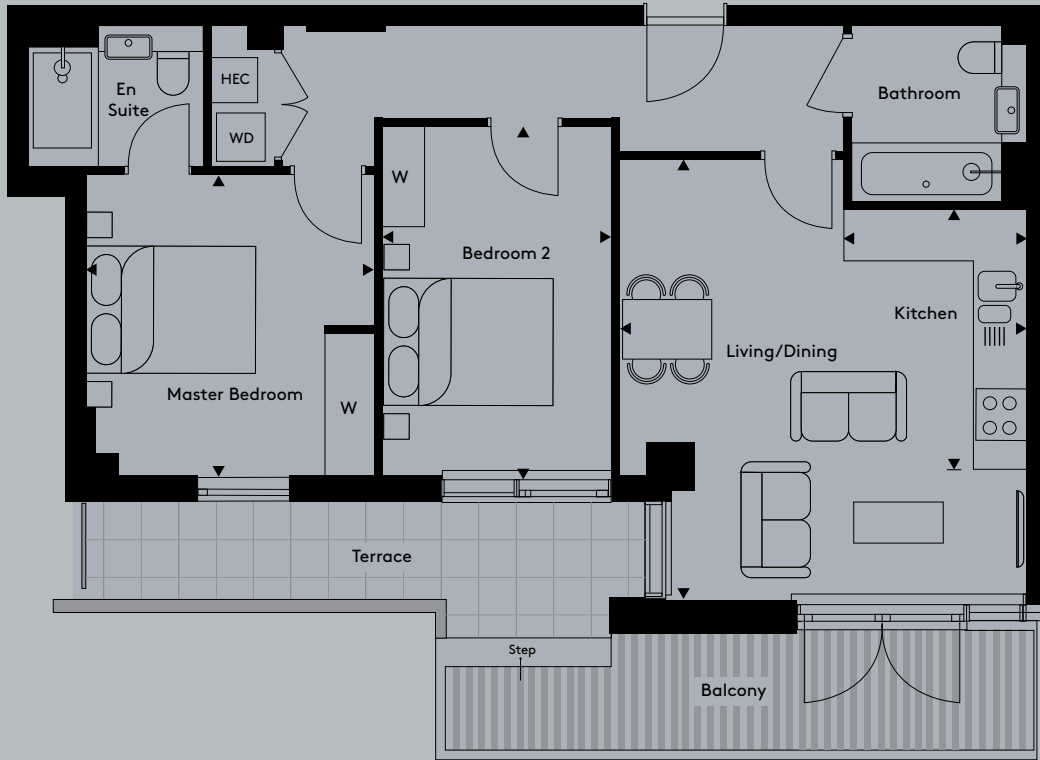


# Apartment 34

## 2 bedroom apartment

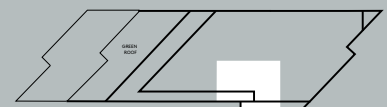
Floor	4
Apt No	34



<b>Total Internal Area</b>	<b>732.8 sq ft</b>	<b>68.1 sq m</b>
Living/Dining	17' 5" x 16' 0"	5310mm x 4888mm
Kitchen	10' 3" x 7' 2"	3126mm x 2196mm
Master Bedroom	11' 11" x 11' 4"	3635mm x 3462mm
Bedroom 2	13' 10" x 9' 0"	4210mm x 2750mm
Terrace	21' 6" x 3' 5"	6600mm x 1075mm
Balcony	191.9 sq ft	17.8 sq m

### Key

WD	Washer Dryer	HEC	Heating and Electrical Components
W	Fitted Wardrobe	C	Cupboard



Floorplans not to scale. The room sizes shown are taken from the dimension arrows on the floorplans which represent the maximum dimensions, a tolerance of +/- 5% is allowed. External finishes on certain designs, layouts, window positions and styles may vary, please check with the sales consultant. These floor plans are a guide only and may be subject to change. Area measurements are given as Gross Internal Area (GIA).