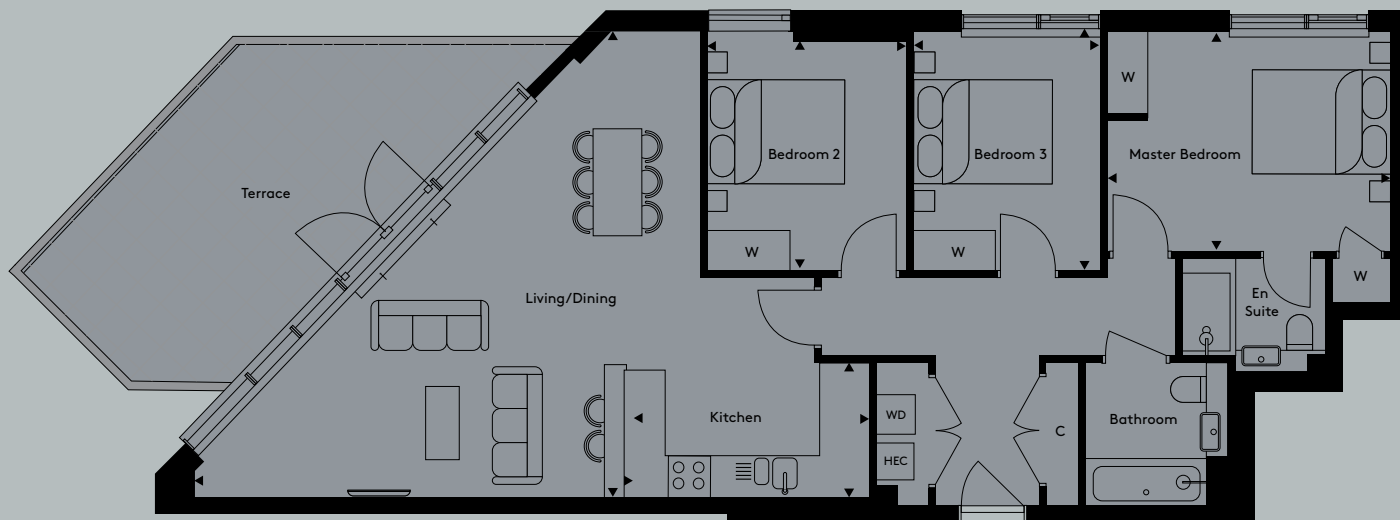


Apartment 32

3 bedroom apartment

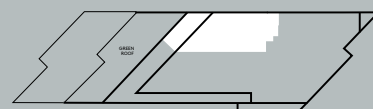
Floor	4
Apt No	32



Total Internal Area	1039.4 sq ft	96.6 sq m
Living/Dining	22' 5" x 21' 2"	6845mm x 6444mm
Kitchen	11' 5" x 6' 6"	3470mm x 1980mm
Master Bedroom	13' 4" x 10' 7"	4072mm x 3230mm
Bedroom 2	11' 8" x 9' 0"	3555mm x 2755mm
Bedroom 3	9' 7" x 7' 9"	2923mm x 2355mm
Terrace	218.0 sq ft	20.3 sq m

Key

WD	Washer Dryer	HEC	Heating and Electrical Components
W	Fitted Wardrobe	C	Cupboard



Floorplans not to scale. The room sizes shown are taken from the dimension arrows on the floorplans which represent the maximum dimensions, a tolerance of +/- 5% is allowed. External finishes on certain designs, layouts, window positions and styles may vary, please check with the sales consultant. These floor plans are a guide only and may be subject to change. Area measurements are given as Gross Internal Area (GIA).