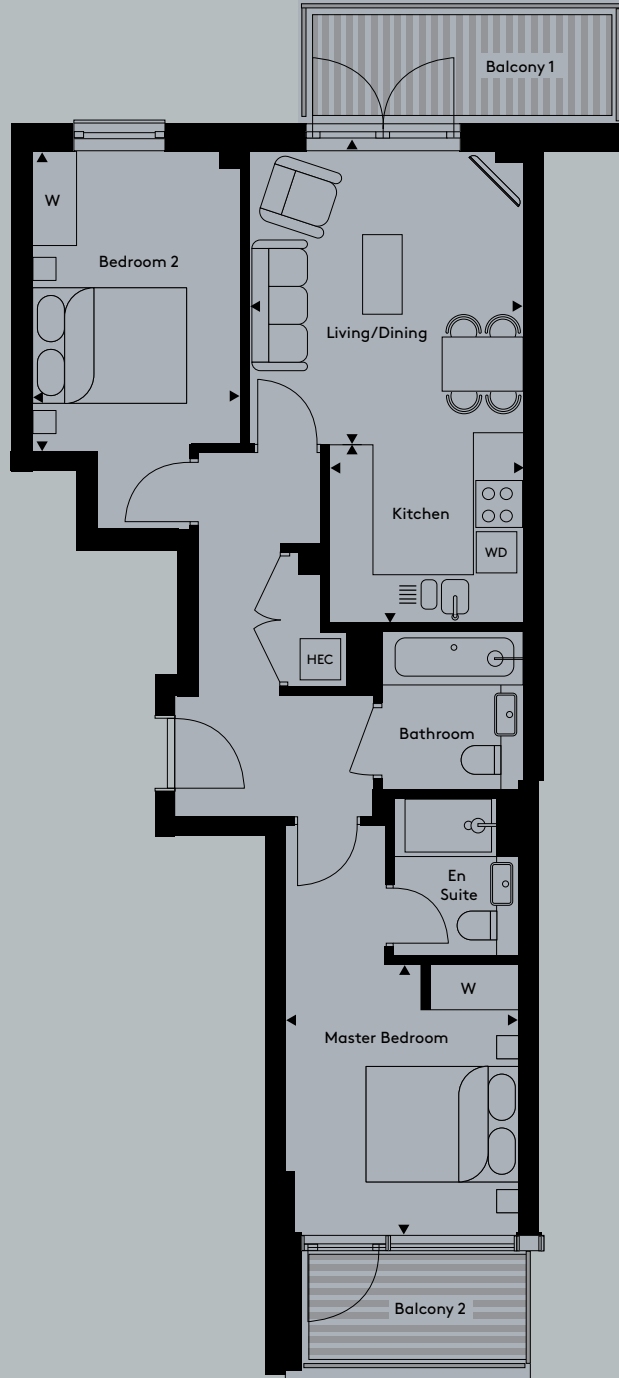


Apartment 28

2 bedroom apartment

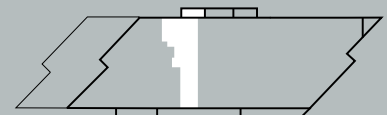
Floor	3
Apt No	28



Total Internal Area	702.6 sq ft	65.3 sq m
Living/Dining	12' 9" x 11' 11"	3885mm x 3635mm
Kitchen	8' 5" x 7' 9"	2575mm x 2370mm
Master Bedroom	11' 10" x 10' 2"	3600mm x 3090mm
Bedroom 2	9' 9" x 9' 0"	2980mm x 2750mm
Balcony 1	64.2 sq ft	6.0 sq m
Balcony 2	41.7 sq ft	3.9 sq m

Key

WD	Washer Dryer	HEC	Heating and Electrical Components
W	Fitted Wardrobe	C	Cupboard



Floorplans not to scale. The room sizes shown are taken from the dimension arrows on the floorplans which represent the maximum dimensions, a tolerance of +/- 5% is allowed. External finishes on certain designs, layouts, window positions and styles may vary, please check with the sales consultant. These floor plans are a guide only and may be subject to change. Area measurements are given as Gross Internal Area (GIA).