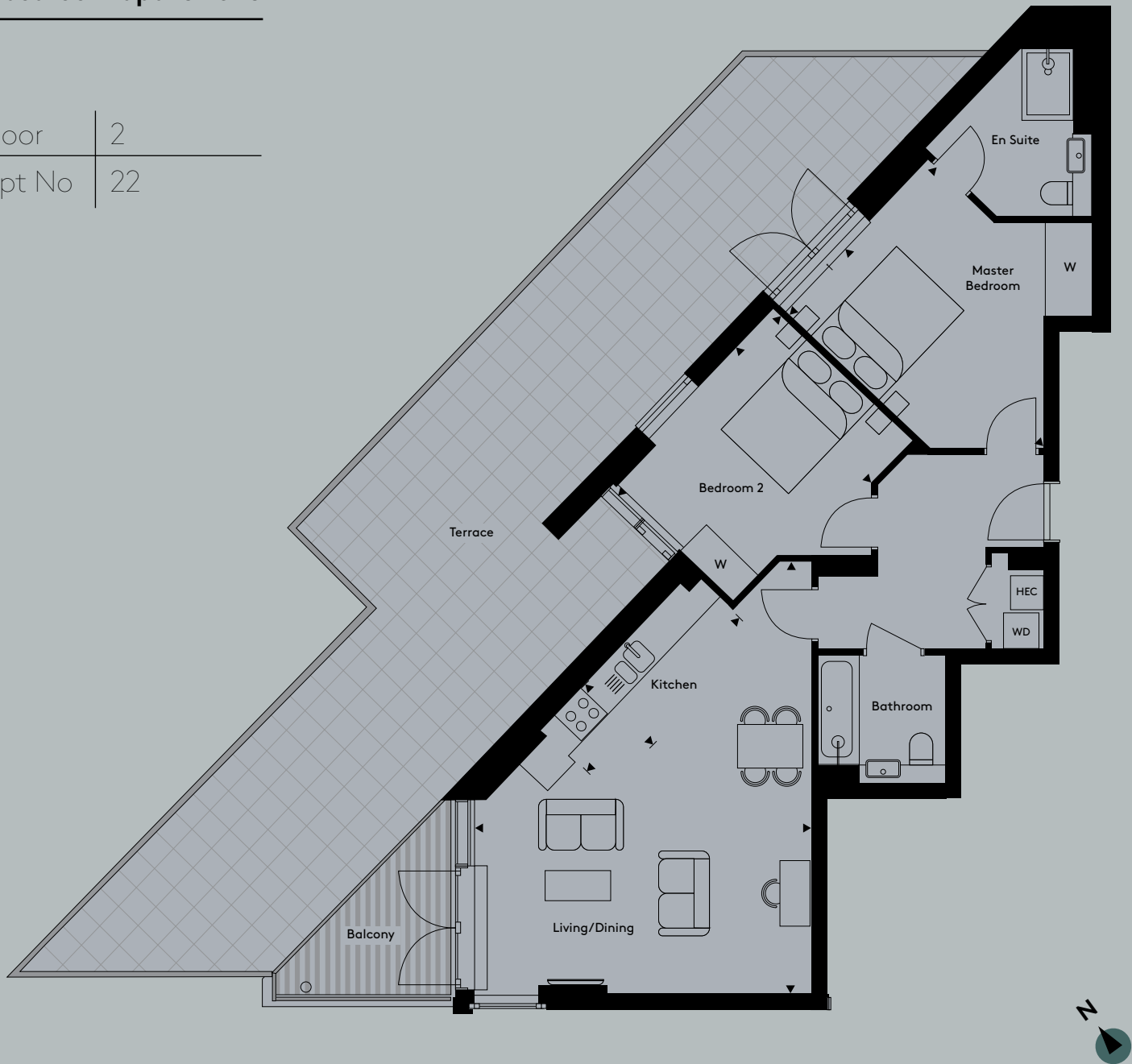


# Apartment 22

## 2 bedroom apartment

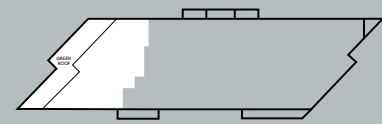
|        |    |
|--------|----|
| Floor  | 2  |
| Apt No | 22 |



|                            |                    |                  |
|----------------------------|--------------------|------------------|
| <b>Total Internal Area</b> | <b>871.6 sq ft</b> | <b>81.0 sq m</b> |
| Living/Dining              | 23' 5" x 18' 0"    | 7145mm x 5490mm  |
| Kitchen                    | 11' 10" x 6' 0"    | 3616mm x 1838mm  |
| Master Bedroom             | 13' 1" x 10' 4"    | 3988mm x 3153mm  |
| Bedroom 2                  | 15' 3" x 11' 3"    | 4651mm x 3428mm  |
| Terrace                    | 687.2 sq ft        | 63.9 sq m        |

**Key**

- |    |                 |     |                                   |
|----|-----------------|-----|-----------------------------------|
| WD | Washer Dryer    | HEC | Heating and Electrical Components |
| W  | Fitted Wardrobe | C   | Cupboard                          |



Floorplans not to scale. The room sizes shown are taken from the dimension arrows on the floorplans which represent the maximum dimensions, a tolerance of +/- 5% is allowed. External finishes on certain designs, layouts, window positions and styles may vary, please check with the sales consultant. These floor plans are a guide only and may be subject to change. Area measurements are given as Gross Internal Area (GIA).