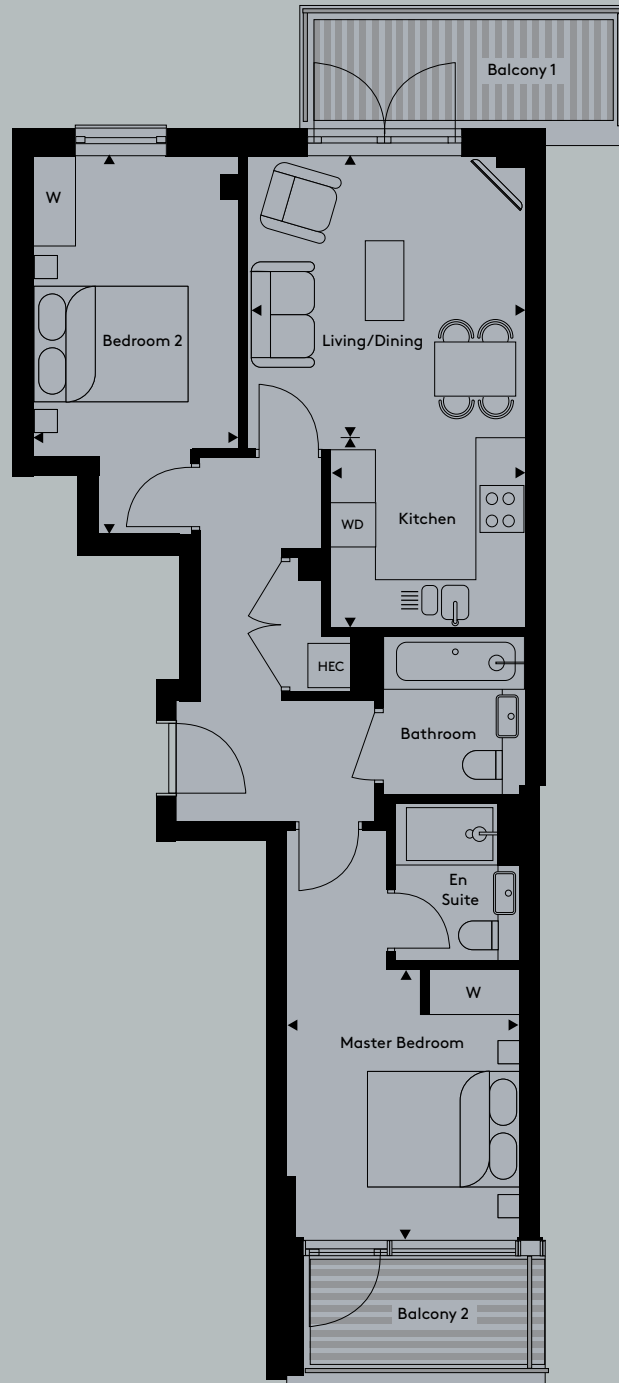


Apartment 10

2 bedroom apartment

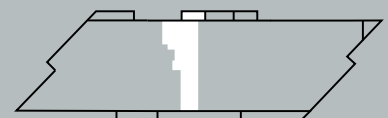
| | |
|--------|----|
| Floor | 1 |
| Apt No | 10 |



| | | |
|----------------------------|--------------------|------------------|
| Total Internal Area | 702.6 sq ft | 65.3 sq m |
| Living/Dining | 13' 3" x 11' 11" | 4050mm x 3635mm |
| Kitchen | 8' 5" x 7' 9" | 2575mm x 2370mm |
| Master Bedroom | 11' 10" x 10' 2" | 3600mm x 3090mm |
| Bedroom 2 | 16' 5" x 9' 0" | 5005mm x 2750mm |
| Balcony 1 | 64.2 sq ft | 6.0 sq m |
| Balcony 2 | 41.7 sq ft | 3.9 sq m |

Key

| | | | |
|----|-----------------|-----|-----------------------------------|
| WD | Washer Dryer | HEC | Heating and Electrical Components |
| W | Fitted Wardrobe | C | Cupboard |



Floorplans not to scale. The room sizes shown are taken from the dimension arrows on the floorplans which represent the maximum dimensions, a tolerance of +/- 5% is allowed. External finishes on certain designs, layouts, window positions and styles may vary, please check with the sales consultant. These floor plans are a guide only and may be subject to change. Area measurements are given as Gross Internal Area (GIA).