

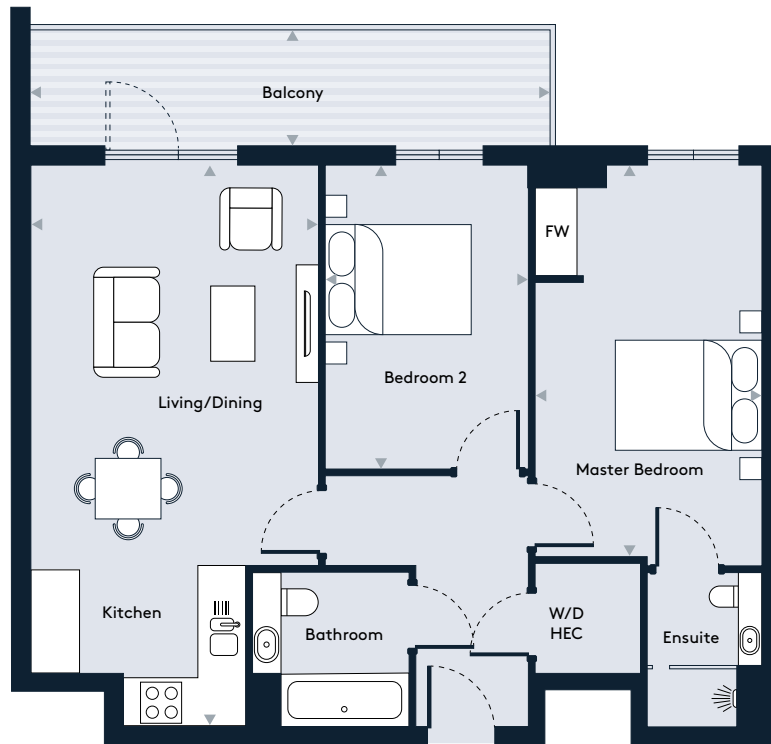
Apartment 78, Floor 11

2 Bedroom apartment



Walthamstow Gateway

A new destination by Solum



Key

W/D	Washer/Dryer	HEC	Heating/Electrical Components
FW	Fitted Wardrobe		

Dimensions

Room	mm	ft
Living / Dining / Kitchen	3828 x 7544	12'6" x 24'9"
Master Bedroom	3064 x 5263	10'0" x 17'3"
Bedroom 2	2747 x 4050	9'0" x 13'3"
Balcony	7000 x 1456	22'11" x 4'9"
Total Internal Area	71.3 m²	767 sq ft

Floor Plate

