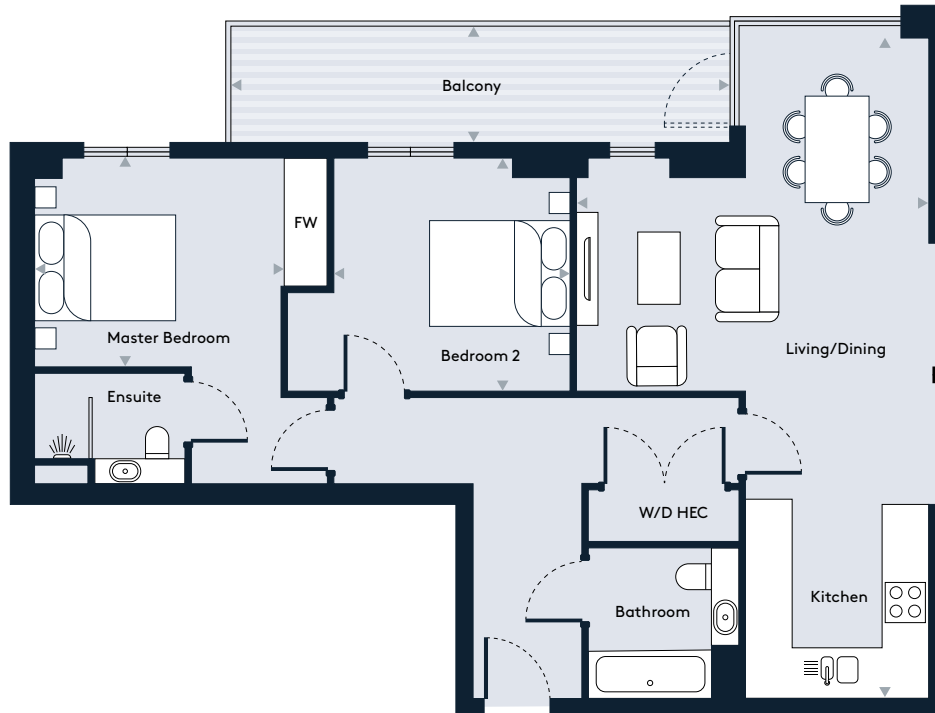


Apartment 66, Floor 9

2 Bedroom apartment



Walthamstow Gateway
A new destination by Solum



Key

W/D	Washer/Dryer	HEC	Heating/Electrical Components
FW	Fitted Wardrobe		

Dimensions

Room	mm	ft
Living / Dining / Kitchen	4914 x 9228	16'1" x 30'3"
Master Bedroom	3453 x 2895	11'3" x 9'5"
Bedroom 2	3300 x 3245	10'9" x 10'7"
Balcony	6866 x 1396	22'6" x 4'6"
Total Internal Area	78.8 m²	848 sq ft

Floor Plate

