

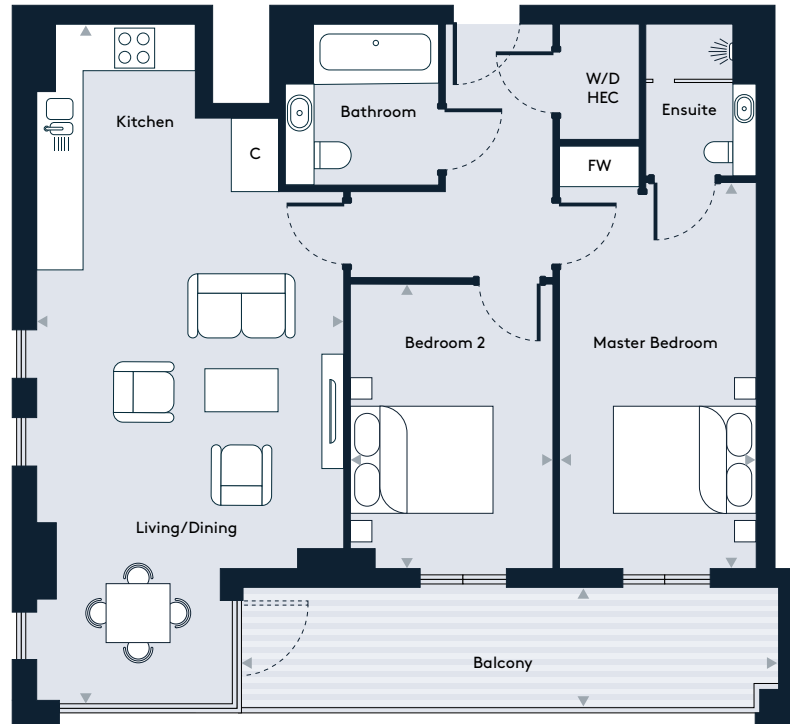
Apartment 6, Floor 2

2 Bedroom apartment



Walthamstow Gateway

A new destination by Solum



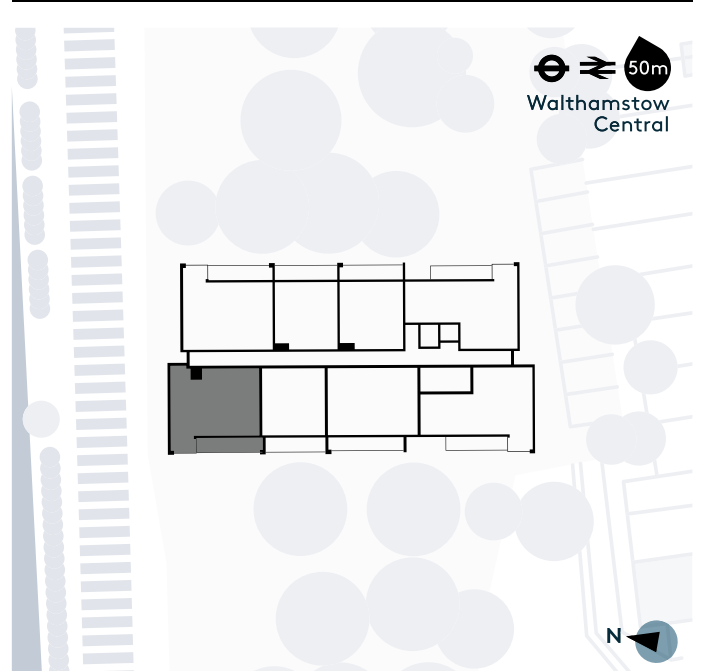
Key

W/D	Washer/Dryer	HEC	Heating/Electrical Components
FW	Fitted Wardrobe	C	Cupboard

Dimensions

Room	mm	ft
Living / Dining / Kitchen	3840 x 7547	12'7" x 24'9"
Master Bedroom	2967 x 4544	9'8" x 14'10"
Bedroom 2	2850 x 3245	9'4" x 10'7"
Balcony	1431 x 7445	4'8" x 24'5"
Total Internal Area	74.7 m²	804 sq ft

Floor Plate



Floorplans shown for Walthamstow Gateway are for approximate measurements only and are not to scale. Exact layout and sizes may vary. Totals represent the Gross Internal Area (GIA). All measurements may vary within a tolerance of 5%.