

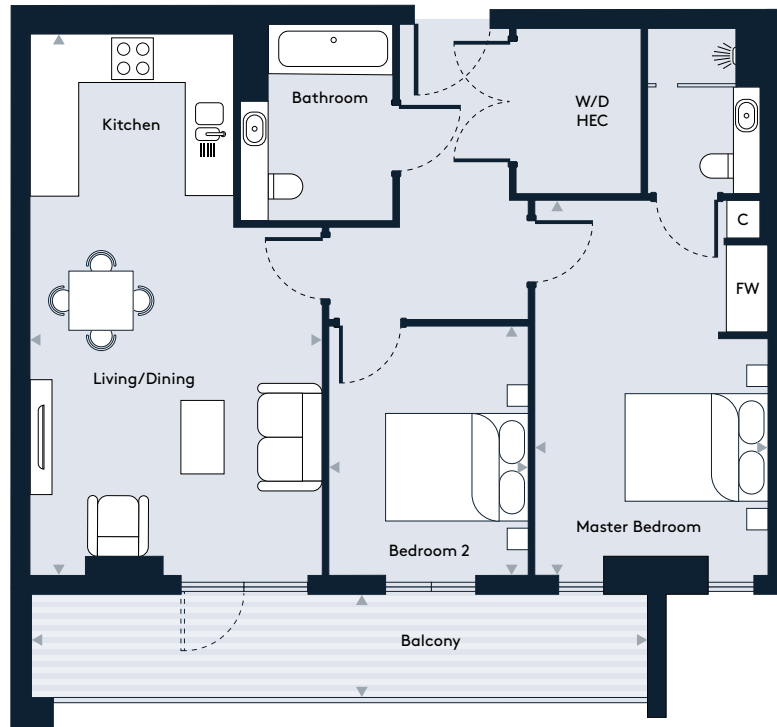
# Apartment 28, Floor 5

## 2 Bedroom apartment



**Walthamstow Gateway**

A new destination by Solum



### Key

W/D	Washer/Dryer	HEC	Heating/Electrical Components
FW	Fitted Wardrobe	C	Cupboard

### Dimensions

Room	mm	ft
Living / Dining / Kitchen	4022 x 7469	13'2" x 24'6"
Master Bedroom	3200 x 5172	10'5" x 16'11"
Bedroom 2	2747 x 3446	9'0" x 11'3"
Balcony	8460 x 1381	27'9" x 4'6"
<b>Total Internal Area</b>	<b>74.9 m<sup>2</sup></b>	<b>806 sq ft</b>

### Floor Plate

