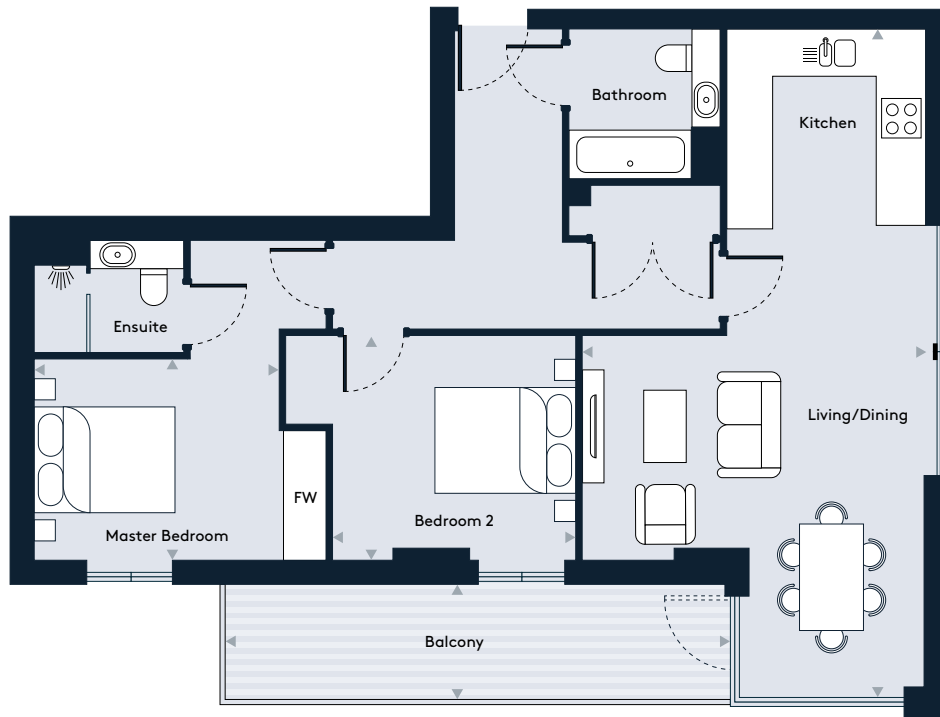


Apartment 19, Floor 3

2 Bedroom apartment



Walthamstow Gateway
A new destination by Solum



Key

W/D	Washer/Dryer	HEC	Heating/Electrical Components
FW	Fitted Wardrobe		

Dimensions

Room	mm	ft
Living / Dining / Kitchen	4829 x 9227	15'10" x 30'3"
Master Bedroom	3453 x 2910	11'3" x 9'6"
Bedroom 2	3400 x 3250	11'1" x 10'7"
Balcony	6896 x 1391	22'7" x 4'6"
Total Internal Area	79.8 m²	859 sq ft

Floor Plate

