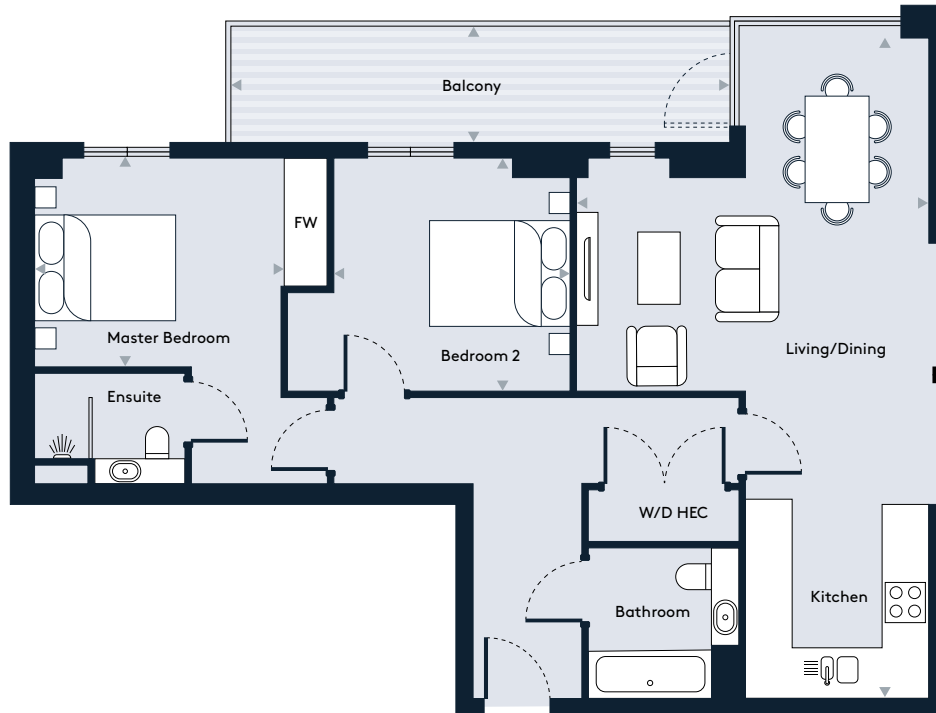


# Apartment 10, Floor 2

## 2 Bedroom apartment



**Walthamstow Gateway**  
A new destination by Solum



### Key

W/D	Washer/Dryer	HEC	Heating/Electrical Components
FW	Fitted Wardrobe		

### Dimensions

Room	mm	ft
Living / Dining / Kitchen	4914 x 9228	16'1" x 30'3"
Master Bedroom	3453 x 2895	11'3" x 9'5"
Bedroom 2	3300 x 3245	10'9" x 10'7"
Balcony	6866 x 1396	22'6" x 4'6"
<b>Total Internal Area</b>	<b>78.8 m<sup>2</sup></b>	<b>848 sq ft</b>

### Floor Plate

